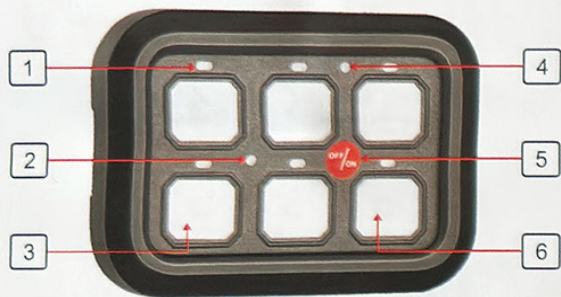


Switch Panel Operation



- 1 - Red LED lights up to show the circuit is on
- 2 - Integrated sensor circuit, backlit brightness dimmable
- 3 - Area for DIY placement of the selected labels
- 4 - Red LED lights up when the switch panel is powered on
- 5 - Manual power activation button, press to turn on/off. Function momentary
- 6 - Green LED illumination area, back light for the label

Backlit Brightness Dimmable

This backlit brightness dimmer function brings better user experience and improve safety driving experience.

At Night



Daytime



The backlit brightness of the switch panel is automatically dimmable according to the brightness variation of the environment. The darker the surroundings is, the darker the backlit will be; The brighter the surroundings is, the brighter the backlit will be.

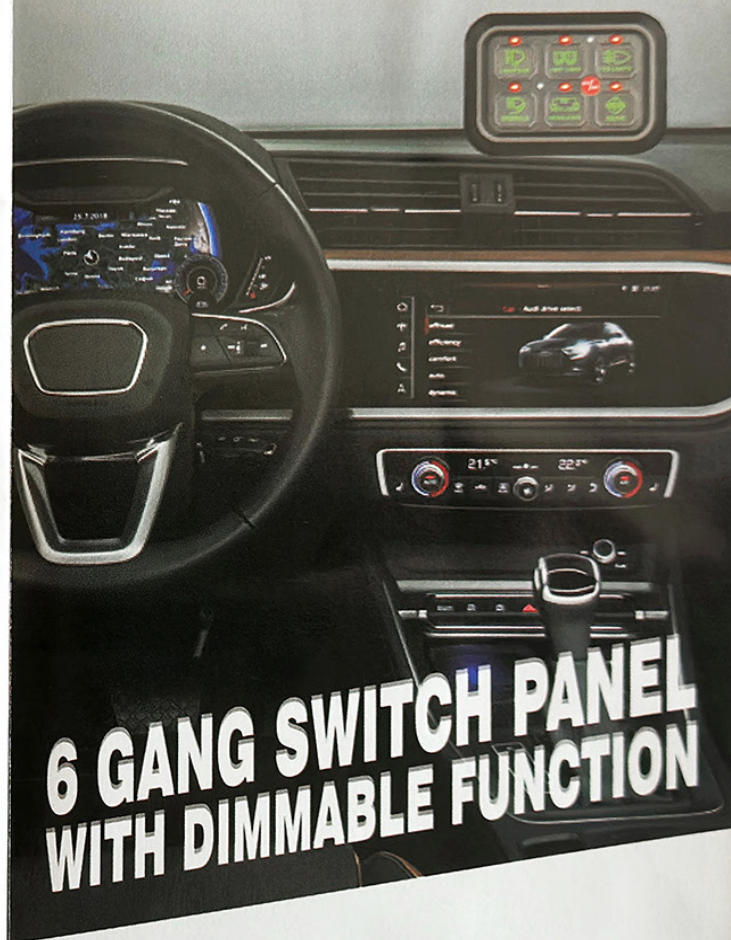
Off-Road



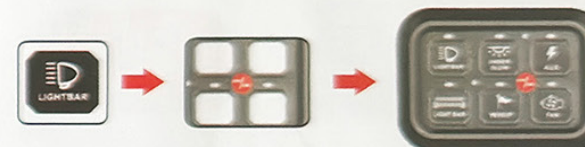
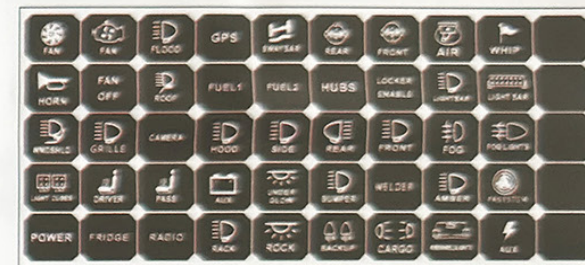
Powersports



Marine



50pcs Reusable Switch Labels



- Thoroughly clean the switch panel. Use warm soapy water first to remove all wax and dirt. Then dry and use a cleaner such as rubbing alcohol to clean the surface. Once clean do not touch.
- Peel off the label and firmly press down on the switch panel.



- Multi-function labels for DIY your specific needs.
- The best way to install and control many LED lights or any other electrical devices.

What's Included



Switch Panel



Circuit Control Box



50pcs Labels



3M Double-sided Tape



Auto Fuses



Plug & Play Wiring



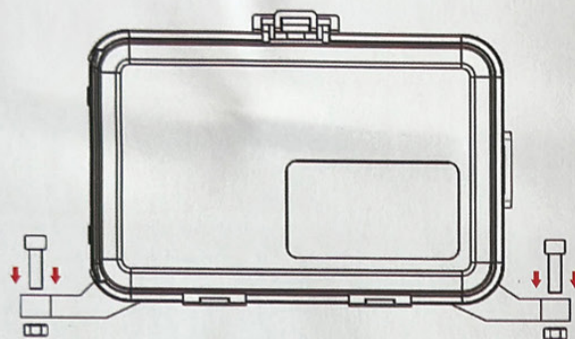
Adjustable Mount Bracket

Mounting Pack

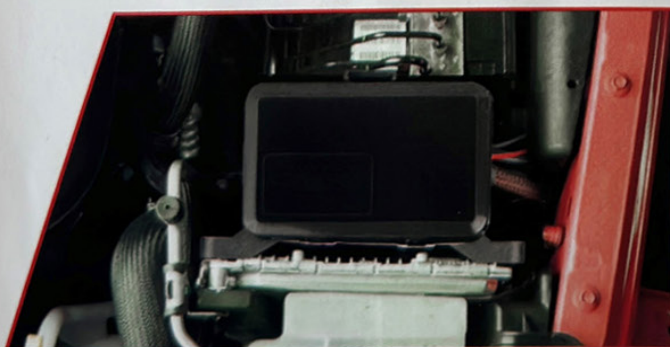
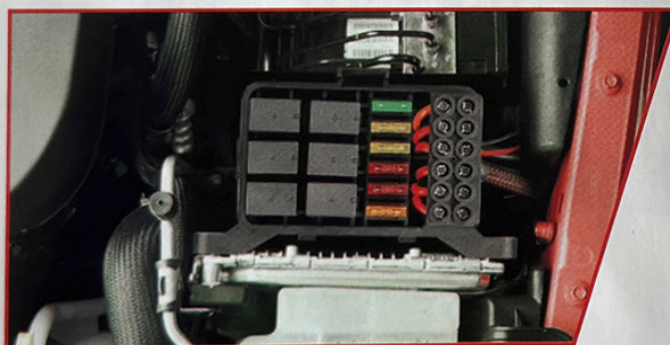
Product Features

- Input Voltage: 12V
- Max. Output Power: 720W
- Max. Input Current: 60A
- Switch Panel Size: 3.74" * 2.65"
- Switch Panel Material: High quality ABS and aluminum
- Circuit Control Box Size: 6.26" * 3.52" * 3.27"
- Circuit Control Box Material: High quality ABS
- Backlight Dimmable Function: Yes
- Operating Temperature: -40°C ~ +105°C
- Over-Voltage Protection, Over-Current Protection, Reverse Polarity Protection and Thermal Protection

Circuit Box Mounting



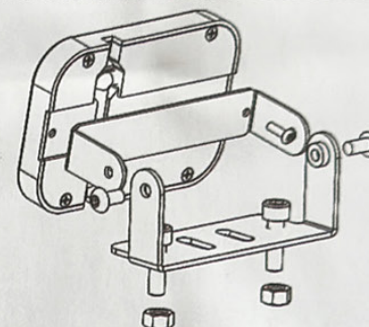
- Find a good location to mount the circuit control box.
- The ideal mounting of the box should allow for an unobstructed path for the power wires, accessory wires, and the control harnesses.
- If you decide to drill, check the clearance behind drilling located. Make sure you are not going to drill through and damage any components of the vehicle.
- Once all connection and installation is completed, check operation of the switch panel system, before reassembling the vehicle.



Switch Panel Mounting

There are two different mounting options provided within the box, adjustable mount and 3M double-sided tape.

Option 1



Adjustable Mount Bracket

- Check to make sure the plug & play wiring is long enough to mount the desired location.
- Check the clearance behind drilling location. Make sure you will not drill through and damage any components in the vehicle.
- Use bracket to mark the drill location, fix and mount the bracket with the switch panel, then proceed to the wiring installation.

Option 2

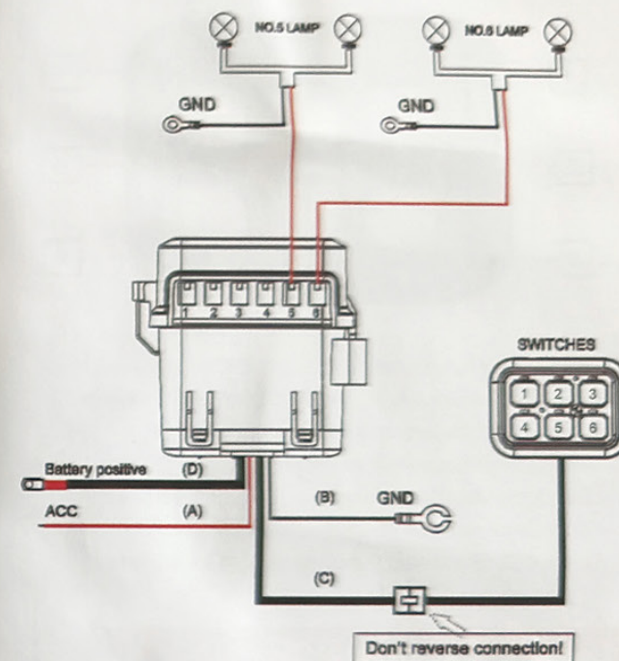


3M Double-sided Tape

- Thoroughly clean the desired mounting location. Use warm soapy water first to remove all wax and dirt. Then dry and use a cleaner to clean the surface. Once clean do not touch.
- Make sure the wire end of the switch panel is to the driver side and peel off the adhesive tape. When the position of switch panel is correct firmly press down on the adhesive tape.
- Proceed to wiring installation.

Note: Please do not attempt to extend the plug & play wire. Cutting or splicing may void the warranty and damage the product.

Installation Guide



- **18AWG Wire (A) :**
Recommend connection, the vehicle's ACC
- **18AWG Wire (B) :**
Recommended connection, the vehicle's - negative battery post
- **22AWG Plug & Play Wire (C):**
Connect the panel to the circuit control box
- **Wire Harness (D) :**
Recommended connection, the vehicle's +12V battery post
- **The panel comes configured with the following fuses:**

Circuit 2	Circuit 4	Circuit 6
20A	10A	5A
Circuit 1	Circuit 3	Circuit 5
30A	20A	10A

★ Please feel free to contact us for any help, thank you!